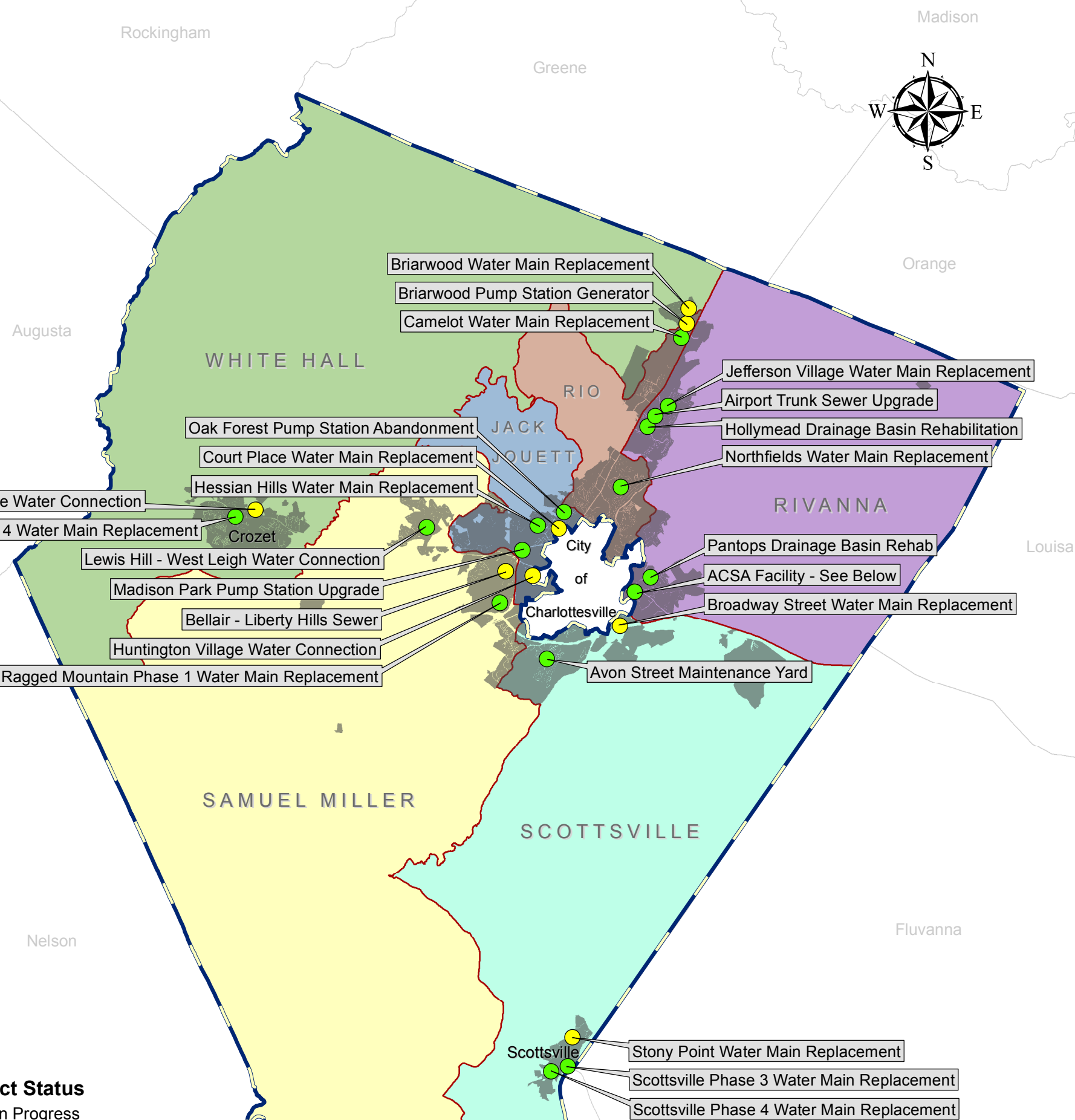


# Albemarle County Service Authority

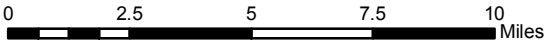
## Capital Improvement Projects by District



SCADA\* - Supervisory Control And Data Aquisition  
SSES\*\* - Sanitary Sewer Evaluation Study  
AMI\*\*\* - Advanced Metering Infrastructure

**DISCLAIMER**

Utilities, structures, lot lines, and all appurtenances indicated on this map are intended for general layout and reference location only. This map is not intended for any other use than for preliminary planning and general reference. The information shown on this map are believed to be accurate, however, recent utility improvements and/or system changes may have been updated in our mapping since the time of this printout. Contact ACSA directly for specific utility locations. Albemarle boundary and ACSA Jurisdictional Area: County of Albemarle Neighboring county boundaries: VA Dept. of Conservation and Recreation





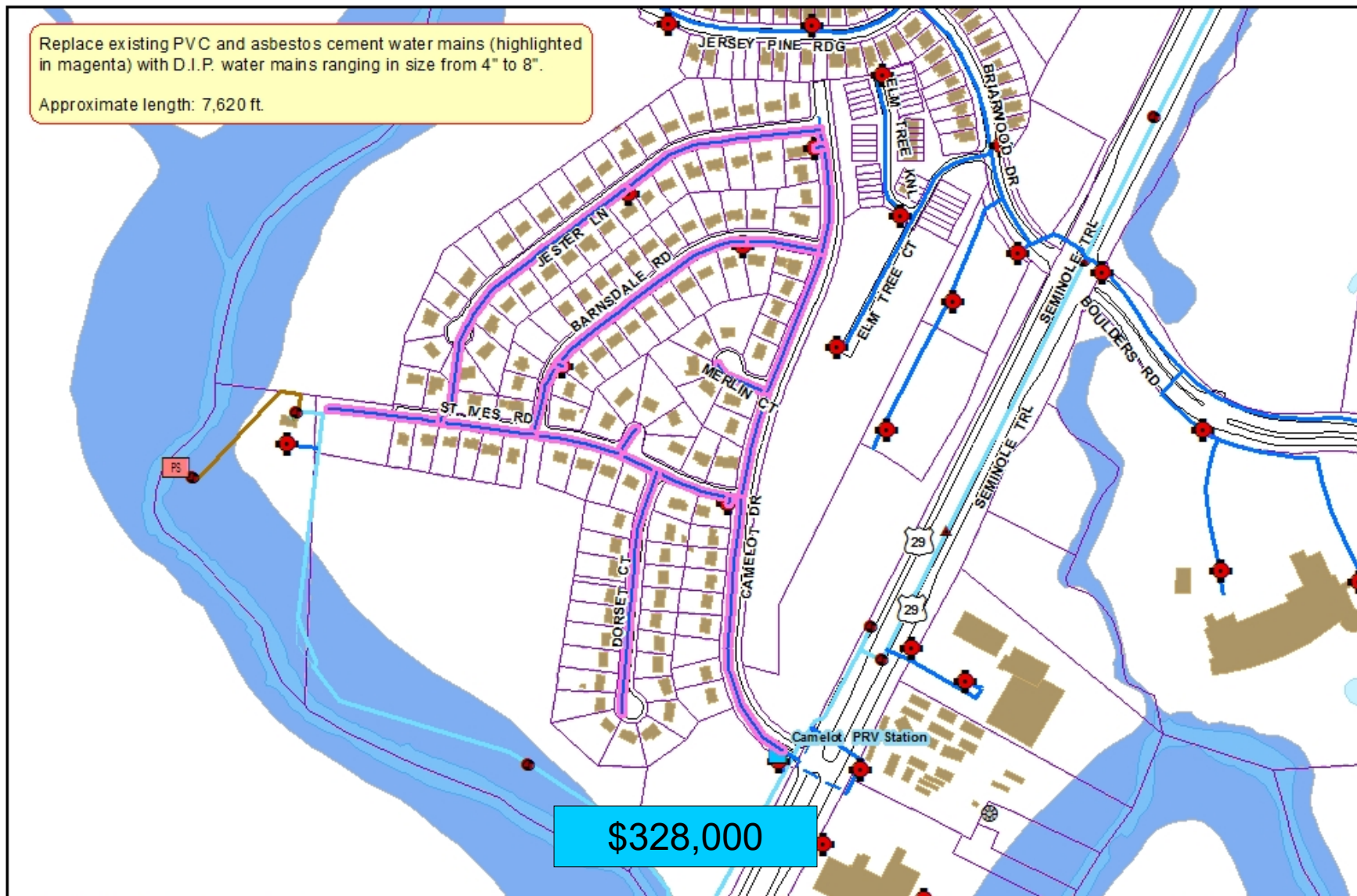
## **CAPITAL IMPROVEMENT PROGRAM FY 2021**

The projects proposed in this Capital Improvement Program reflect the intent of the Albemarle County Service Authority at the date of adoption. Any number of factors could change the viability of any proposed project and projects not listed in the program may be undertaken.

168 Spotnap Rd. Charlottesville, VA. 22911 -- Tel (434) 977-4511 -- Fax (434) 979-0698 – [www.serviceauthority.org](http://www.serviceauthority.org)

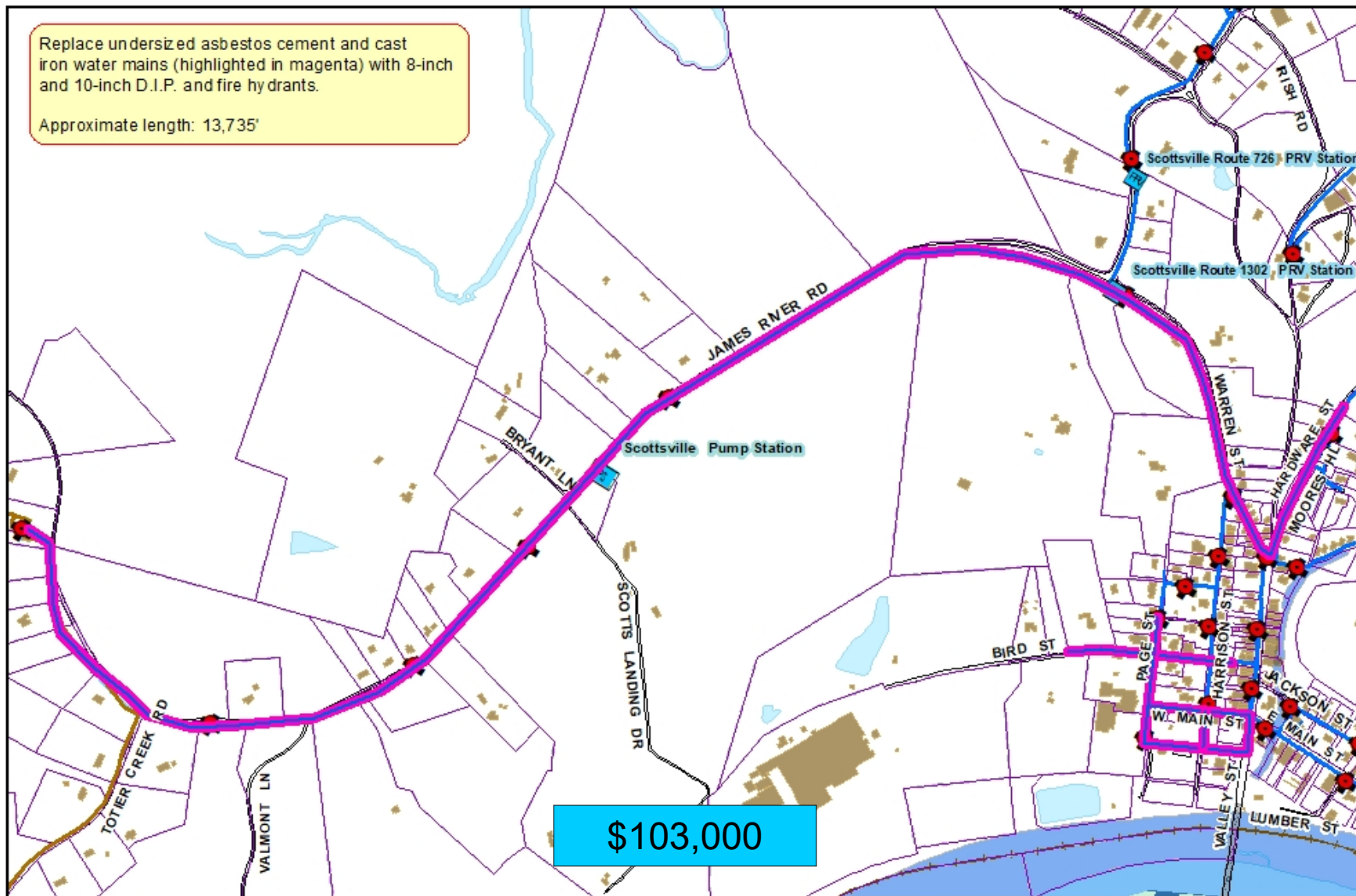


Approximate length: 7,620 ft.

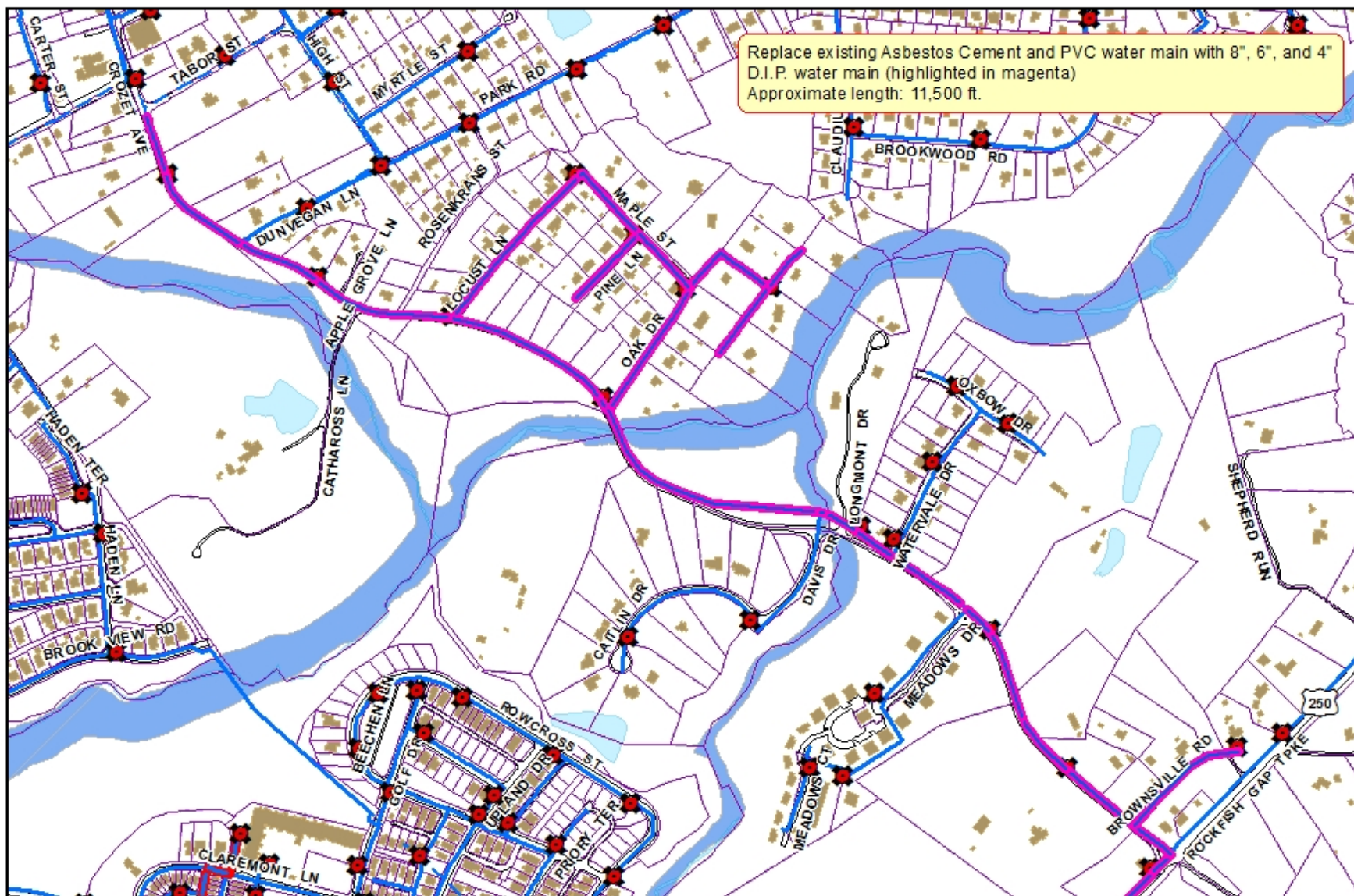


Replace undersized asbestos cement and cast iron water mains (highlighted in magenta) with 8-inch and 10-inch D.I.P. and fire hydrants.

Approximate length: 13,735'



\$103,000



Replace existing Asbestos Cement water main with 8", 6", and 4" D.I.P. water main  
(highlighted in magenta)  
Approximate length: 9,030 ft.

\$535,300

Approximate length: 1,500 ft.

Water Main to be Abandoned  
(Highlighted in Yellow)

**\$117,400**

Approximate length: 6,185 ft.

**\$1,646,650**



Replace existing cast iron and PVC water mains (highlighted in magenta) with 4-inch through 12-inch diameter D.I.P. water mains. New water interconnections shown in Yellow. Approximate length: 13,660 ft.

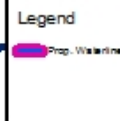
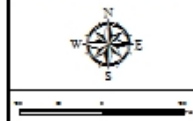
\$1,175,000

**Allegheny County  
Service Authority**  
Serving & Growing  
100 Allegheny Blvd., Suite 200, Pittsburgh, PA 15212 (412) 477-4001

NOT TO SCALE  
This map is a conceptual plan only. It is not intended to be used for construction purposes. It is intended to show the general location of the project and the approximate length of the project. The actual location and length of the project will be determined by the engineer and the contractor. The map is not intended to be used for any other purpose.

## Hessian Hills Water Main Replacement

Capital Improvement Project



Replace existing PVC and portion of D.I.P. water mains (highlighted in magenta) with 4-inch through 10-inch diameter D.I.P. water mains.  
 Approximate length: 6,100 ft.  
 Abandon existing 10-inch PVC water main (highlighted in green). Approximate length 750 ft.  
 New water interconnection shown in yellow.

\$220,000

**Albemarle County**  
**Service Authority**

Serving & Conserving  
 168 Spotnapp Road Charlottesville, VA 22911 (434) 977-4511

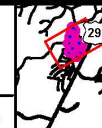
DISCLAIMER  
 Utilities, structures, lot lines, and all other information indicated on this map are intended for general layout and reference purposes only. This project is not intended for any other use than for preliminary planning and general location purposes. The data shown on this map are believed to be accurate, however, recent utility improvements and/or system changes may have been updated in our mapping since the time of this printout.  
 Contact AUSA directly for specific utility locations.  
 Aerial Imagery © 2012 Commonwealth of Virginia  
 Parcel Information Property of County of Albemarle

## Briarwood Water Main Replacement

### Capital Improvement Project



0 50 100 Feet



Legend

- Proposed Pipe
- Abandoned Pipe



Replace existing PVC water mains (highlighted in magenta) with 4-inch through 8-inch diameter D.I.P. water mains. Approximate length: 680 ft.

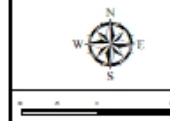
\$68,325

**Allegheny County  
Service Authority**  
Serving & Caring  
100 Allegheny Blvd., Suite 200, Pittsburgh, PA 15212 (412) 477-4471

THIS IS A MAP.  
The information shown on this map is for informational purposes only and does not constitute a contract. The information shown on this map is for informational purposes only and does not constitute a contract. The information shown on this map is for informational purposes only and does not constitute a contract.

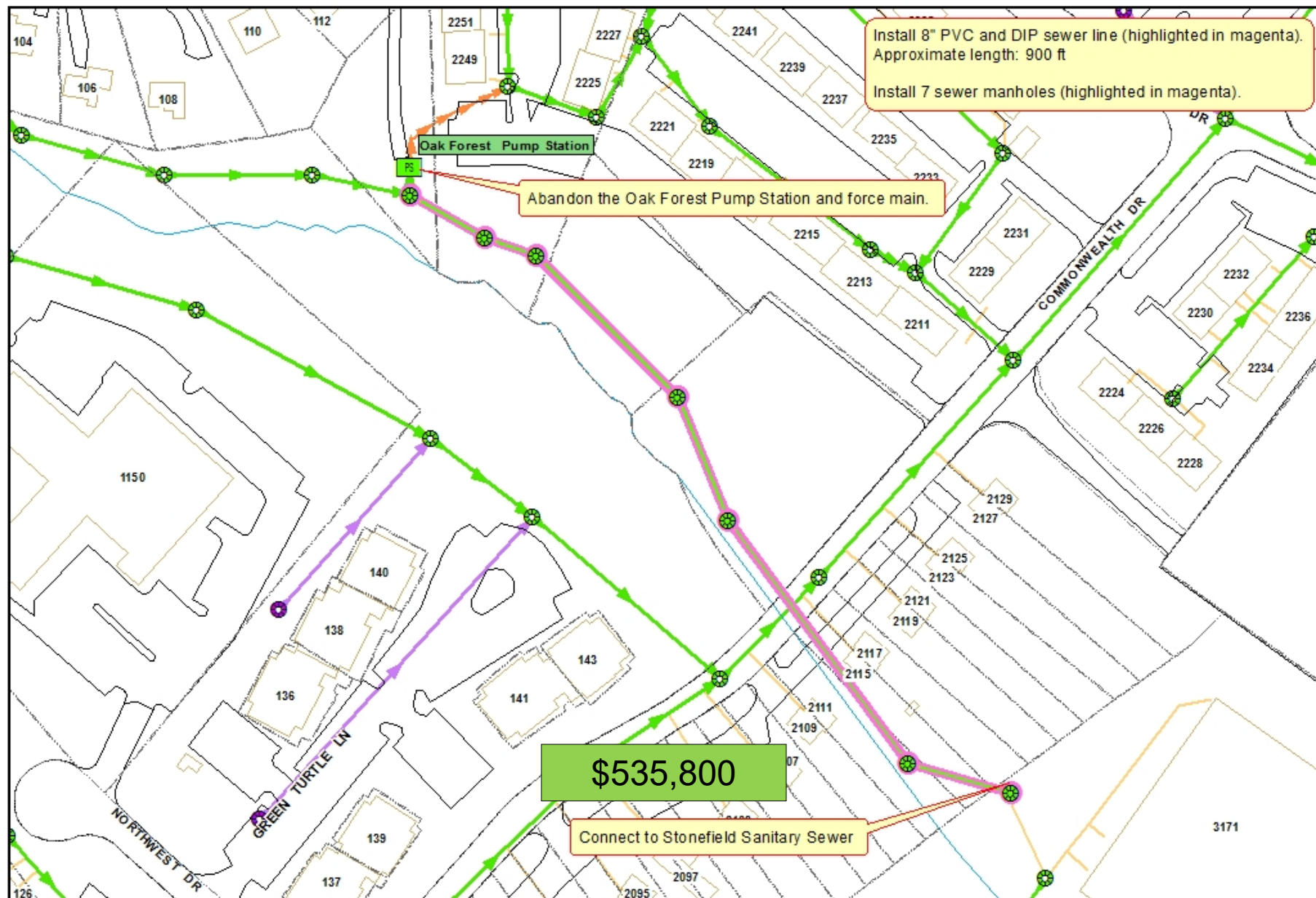
## Court Place Water Main Replacement

Capital Improvement Project



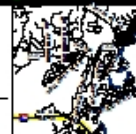
**Legend**  
 Court Place Water Main Replacement  
 ACSA Water Main  
**Ownership**  
 ACSA  
 Private Ownership





## Oak Forest Pump Station Abandonment

Capital Improvement Project



### Legend

- Proposed Manhole
- Proposed Sewerline

Construct 8" sewer lines (highlighted in magenta)  
to serve Bellair/Libert Hills.  
Approximate length: 13,375 LF.

Install 40 sewer manholes (highlighted in magenta)

RWSA Crozet Interceptor

\$313,200

# Bellair/Liberty Hills Sewer

Capital Improvement Project

Replace existing pump station with larger station, new pumps and SCADA control system.

Polysyn Chloride

250/29-BYPASS-SB-AT-RT-601-OFF-RAMP-0029

FAUCONER-DR-0855

250

250

250/29-BYPASS-SB-ON-RAMP-0029

OLD NY RD-0601

250/29-BYPASS-0029

250/29-BYPASS-0029

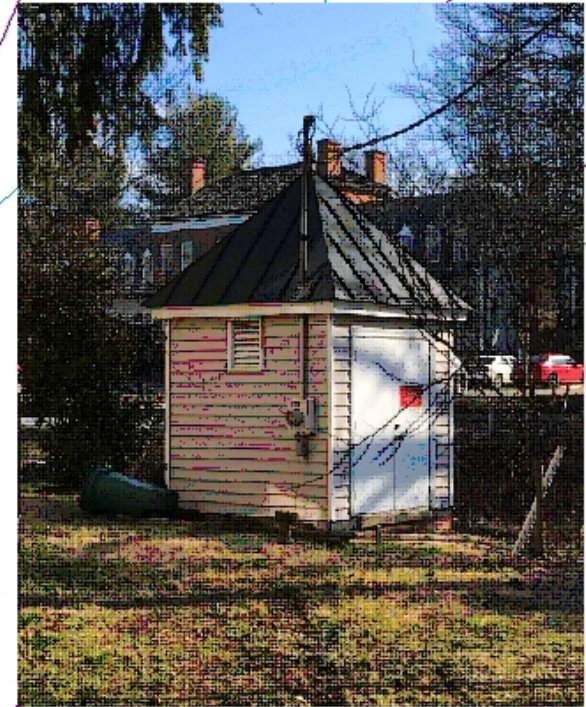
NY RD-0250

NY RD-0250

Madison Office Park Pump Station

\$371,625

The map shows the proposed location for the Madison Office Park Pump Station, highlighted in green. It is situated near the intersection of Old NY Rd (0601) and the 250/29 bypass. The map also shows existing infrastructure like the Polysyn Chloride line and various ramps. An inset photograph shows the current pump station building, a small, weathered structure with a gabled roof.



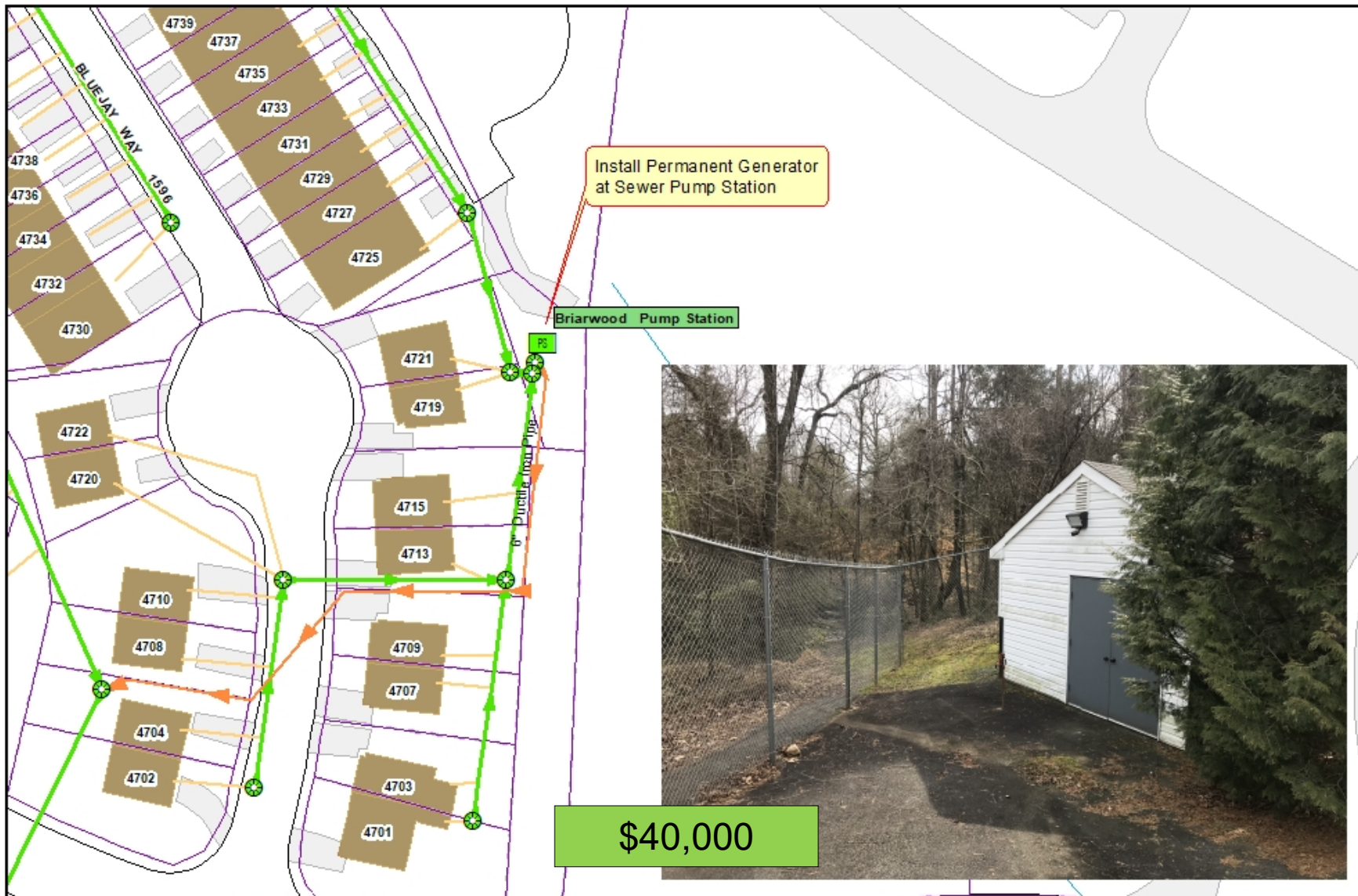
\$371,625

Replace undersized galvanized and cast iron water mains (highlighted in magenta) with 4-inch 6-inch and 8-inch D.I.P. and fire hydrants.

Approximate length: 2,050'

\$175,000





# Projects Without Maps



Risk Assessment  
Improvements

\$524,950



Enterprise Resource  
Planning (ERP)

\$108,150



Energy Audit

\$300,000



ACSA Facilities –  
Bathrooms and Customer  
Service

\$125,000



Advanced Metering  
Infrastructure (AMI)

\$2,700,000



Four-Story Residential  
Backflow Prevention  
Device Retrofit

\$348,000

# Ongoing Projects



Miscellaneous  
Sewer  
Rehabilitation

\$400,000  
Annually



Exclusion  
Meters  
Replacement

\$247,500  
Annually



Pipe Saddles  
Replacement

\$50,000  
Annually



Developer  
Participation

\$100,000  
Annually